



Montague Art and Craft Society Inc Newsletter June 2026



President's report - June 2026

Hi everyone,
The Pottery and Watercolour groups welcomed back Donna Goulding, who has been recovering from an accident and was missed by all.

Jane Miller (Secretary) and I set up a MACS information stall at the recent Community & Volunteer Expo, held at the Narooma Sports and Leisure Centre. I believe only about 70 people came through the door over the four hours, probably due to the inclement weather. Even so, many people were interested in what we do and what we stand for. The new bookmarks came in handy, and many were handed out.

A MACS/Narooma Community Men's Shed initiative has been approved for the installation of show cases in the arcade at 114 Wagonga Street (behind Luke Kelly's Art Room). This will begin after maintenance work is carried out and will be a fantastic opportunity to promote MACS artwork alongside the variety of work by the Community Shed.

The MACS exhibition at the Narooma Library was changed over on Monday, 1 June. An oil painting by Christine C. was sold within 48 hours. Well done, Christine.

Cheers
Cathy Amos

**The next
changeover will
be Monday 31
August.**

Work by
Alison
Spurgeon



WHAT'S ON – June 2026

Alternate Mondays –

Stained Glass Group with Bob Burnside



Monday afternoons

Oils & Acrylics with Cheryl Hill



Tuesdays –

TEXTILES from 10:00 am with Judy Glover



Wednesday mornings

Mosaics with Judy Gordon



**Wednesday Afternoons and
Thursday mornings**

Pottery and Ceramics with Donna Goulding



Thursday afternoons

Water colour with Cathy Amos



Friday Mornings –

Life Drawing with Janet Jones & Lorraine Willcock



PLEIN AIR
February – June, 2026

February

2 – 3	Bullengella Lake
9 - 10	Ringlands Rainforest
16 - 17	Jersey Cattle, Tilba
23 – 24	Potato Creek

March

2 - 3	Nangudga Views, Tilba
9 – 10	Bingi Rocks
16 – 17	Cemetery Beach, Glasshouse Rocks
23 - 24	Mossy Point Coffee Van
30 - 31	Cowdroy Creek

April

6 – 7	Forsters Bay Sheds
13 - 14	Moruya Old Buildings
20 - 24	Braidwood
27 – 28	Henkley Farm, Tilba

MAY

3 – 4	Camel Rock
10 – 11	Tuross River Bridge
17 – 18	Punkalla
24 – 25	Turlinja – old house

JUNE

1 – 2	Lewis Island
8 – 9	Cresswick Cove, Dalmeny
15 – 16	Corunna Creek, Old Highway
22 – 23	Town Wharf
29 – 30	Bermagui River, upstream

MACS VISION - A place to work together in creative groups.
Workshops for members to upgrade and diversify their skills.
Opportunities for members to exhibit their work.

MACS' NEWS –

Member Updates – by Judy Glover



Toni Higgins

Toni Higgins - a long-time MACS member and a gifted mosaic artist. Photos of her pottery can still be seen at the MACS studios.

She also served for many years as Treasurer of the Narooma Garden Club during Nancy Curry's presidency.

Toni lived at Tilba on a small property with a beautiful garden. After her husband died, she managed it alone for many years before moving to Dalmeny, where life was easier to maintain. Toni is now at Estia. I visited her recently and found her in good spirits, enjoying the food and company. She would be delighted to have visitors.



Vivienne Bowe Wood

Vivienne visited MACS Studio on Tuesday to donate some art books as she prepared for her move to Hobart.

Viv joined MACS in 1996 and became known as a prolific painter and a valued member of the creative community.

I (Judy Glover), first met Vivienne at the start of the Oyster Festival, when she joined a creative group making cane and paper sculptures for Wagonga. Over many years, she contributed her imagination and energy to these striking designs.

At one time, Vivienne and her husband owned a shop in Tilba where they produced hand-painted T-shirts. She also coordinated the Tilba Art Show and was well known in the community. In 2014, she received the Narooma Citizen of the Year Award in the Year of the Disabled.

Vivienne was born deaf and could lip-read with great skill. She later tried a cochlear implant in the hope of improving her hearing, but it did not bring the result she had hoped for. Throughout it all, her artistic talent and determination stood out.

Exhibitions and Family

Vivienne took part in many MACS exhibitions, as well as River of Art exhibitions. She and Ian also supported the Narooma Wooden Boat Festival, where they exhibited with MACS. Their daughter, Tilly, is also a talented artist.

After recent ill health, Ian and Vivienne decided to move to Hobart to be closer to Tilly.

We wish Viv all the very best for her move. She will be greatly missed in Narooma.

Judy Glover

Studio Groups – Rosy Williams

Oil & Acrylic Painting with Cheryl Hill

During my visit to Cheryl's Monday afternoon oil painting group, I met new member Jo C., who is clearly enjoying learning and painting with Cheryl at the studio.

In the photos, Jo C. and Bob M. are the "gentle critics," watching as convenor Cheryl Hill demonstrates oil painting techniques. Christine's portrait study of her son, based on a recent photo, is still in progress.



Jo C. is also shown with her bird study in progress under Cheryl's guidance.



Wendy shares a recent work developed from a photo.



Jo C. watching Cheryl's techniques in action.



Observation, interaction and experimentation are all valuable parts of learning in MACS workshop groups, and members are delighted to welcome Jo C. to Cheryl's Monday afternoon oil painting group at the MACS Studio.

Water Colour painting with Cathy Amos

Cathy's Thursday watercolour group has recently been inspired by the beauty of the winter gardens at the MACS Studio.

Helen B. is pictured with her study of the Rose of Sharon's bloom.



Lucinda has been inspired by magpies searching for nectar and seeds in the winter chill.



Pottery – with Donna Goulding

It was a delight to see Donna Goulding once more in her happy place after her recovery and back into pottery and painting at the MACS Studio.



The flower opens as white, gradually turns pink, and deepens to a darker pink as it matures.

Life Drawing Group with Lorraine Willcock and Janet Jones

We gather every Friday at MACS Studio from 10 am to 12 noon. This class is the perfect place to meet new friends and improve your drawing skills—skills that will flow into all your creative work.

It is an untutored class, but guidance from others is available if requested.

No training or previous experience is needed.



MACS members are welcome to come along and have fun.

Easels are provided, tea and coffee are available, and we hire professional models.

You will need to bring all your own art materials, including a backing board.

We would enjoy meeting you.

Mosaics with Judy Gordon



Some of the mosaic group entries into the Spiral Gallery Postcard Exhibition.

Plethora of Postcards – 15th Anniversary

This year marks the 15th anniversary of “Plethora of Postcards”.

This is a very popular annual exhibition at Spiral Gallery. It is a true community exhibition, open to everyone, and fills the gallery with hundreds of A6-sized artworks showing an amazing variety of subject matter and media.

The exhibition is on from Friday 12 June to Tuesday 7 July.

**Montague Art &
Craft Society Inc.**
1981 - 2026



**Celebrating 45-years
in the Community
Art Space**

A Brief History

Initial public meeting held on 23 March 1981, at the Dalmeny Bushfire Brigade Hall – 57 people attended to discuss creating a Narooma and District Creative Arts and Crafts Society.

Official name agreed at that meeting was “The Montague Arts and Crafts Society” (MACS).

Inaugural Annual General Meeting (AGM) held 27 July 1981.

First MACS exhibition held at the Narooma High School over Easter 1982.

The official logo, adopted in the 1980’s, was “a graphic representation of flashing beams of light from the famous Montague Lighthouse”.

Regular classes, workshops and exhibitions held in hired halls and outdoors through 1980’s –1990’s.

Incorporated 19 May 1999.

ABN 1 November 1999.

Rented premises at 44B Princes Highway, Narooma, from May 2000 – 2004.

Opened Gallery on the Flat 2000.

Rented premises at Narooma School of Art, the Old Narooma Library (now Cinema 2, Narooma Kinema), from September 2003 – 2007; Official opening 24 February 2004.

Rented premises at the Narooma School of Art Cottage, 92 Campbell Street Narooma from July 2006 – 2017.

Spent 10-months cleaning and renovating The Cottage; Official opening 31 March 2007.

Official letterhead incorporated the MACS Cottage.

MACS Facebook Page created September 2013.

Won tender to manage the Narooma Visitor Information Centre (VIC). Narooma VIC Gallery opened 2016.

Adopted new logo – still with Lighthouse theme, but in colour, and incorporating a paint brush into the design.

Rented by sub-let from the Narooma Men’s Shed, Building 2, 24 Glasshouse Rocks Road, Narooma October 2017 – 2019

Rented directly from owners (MFI) Building 3, 24 Glasshouse Rocks Road, Narooma October 2019.

Note: Eurobodalla Shire Council closed the Narooma Visitor Information Centre May 2021.

NEWS & Events

Please click on the website links below to read about news, activities and events in our region.

[South East Arts](http://southeastarts.org.au) [Four Winds](http://fourwinds.org.au)

seainfo@southeastarts.org.au

[Regional Arts Roundup](http://regionalartsnsw.com.au) [Spiral Gallery](http://spiralgallery.org.au)

newsletter@regionalartsnsw.com.au

SPIRAL GALLERY



The Yellow Teapot by Anthea Moffatt

15th Annual Plethora of Postcards Exhibition

Friday 12th June - Tuesday 7th July

Opening Event on Friday 12th June at 4:30pm, with the prize presentations for the various categories.

The much-loved annual Plethora of Postcards exhibition returns to Spiral Gallery from 12th June to 7th July, celebrating 15 years of creativity, community and artistic surprises.

Visitors are invited to explore a fascinating collection of postcard-sized artworks created by artists from the local community and beyond. Over the past 15 years, Spiral Gallery has received many thousands of postcards made from an extraordinary range of materials — from a moss-encrusted granite stone complete with stamp and message, to a half-eaten Vegemite sandwich preserved in resin. The more obscure the better!

As long as the artwork is A6 size (one quarter of an A4 sheet), it will be accepted, displayed, admired, discussed and possibly sold in this unique and highly popular exhibition.

The idea for Plethora of Postcards was originally developed by Spiral members Diny Stewart and Jenny Mein, Diny being a member since 2005. While working as Community Arts Officer at Gasworks Arts Park in South Melbourne, Diny was inspired by a postcard exhibition at Linden Gallery in St Kilda. Jenny, a former teacher, was eager to create a community-based exhibition that encouraged participation from local schools, teachers and students, giving emerging artists the opportunity to showcase their creativity to family, friends and the wider community during a vibrant mid-winter exhibition. Jenny Mein has kindly agreed to judge this year's entries.

This year's special categories are:

- [In the Garden](#)
- [15 Years... A Continuous Thread](#)





Spiral Gallery 47 Church St Bega.
Open Mon-Fri 10am-4pm, Sat 10am-1pm.
www.spiralgallery.org.au

VOLUNTEER AT THE NEW NAROOMA ARTS CENTRE (NAC)

Whether you're keen to brush-up on your knowledge of the art in the region, able to assist in moving furniture and equipment, other happy to lend a few hours a week or month volunteering at the NAC, we would love to hear from you!

With plenty of exciting exhibitions and workshops in the pipeline, now is the time to join our Volunteer /registry to secure your place at the local heart of the arts - the NAC.

What's in it for you?

-  Invitation to special Volunteer Acknowledgement events
-  Specialised site inductions and training to assist you in fulfilling your role
-  Opportunities to develop skills in a range of areas
-  A chance to meet people and have fun giving back to a community organisation

Come and join the fun! All ages welcome - volunteers under the age of 18 will be paired with an adult mentor.

APPLY HERE:

<https://naroomaschoolofarts.com.au/nac-volunteers>

88 8x8 Artworks Exhibition

The ArtRoom and Bodalla Arts Factory invite you to join us for a wonderful opportunity to create original artwork, showcase your talent and sell your pieces in time for Christmas! **There will be just 88 artworks in the exhibition so limited places available.**

How to Take Part:

Register Online: Entry costs \$5 per canvas. Sign up online to secure your spot. Limit of 4 canvases per artist.

Pick Up Your Canvas: Collect your official 8x8" canvas from the Art Room, 114 Wagonga Street Narooma Wednesday to Monday 9am to 1pm **or** Bodalla Arts Factory, call or message 0438 537 462

Get Creative: Paint, draw, decorate, or use any medium you like on your supplied canvas.

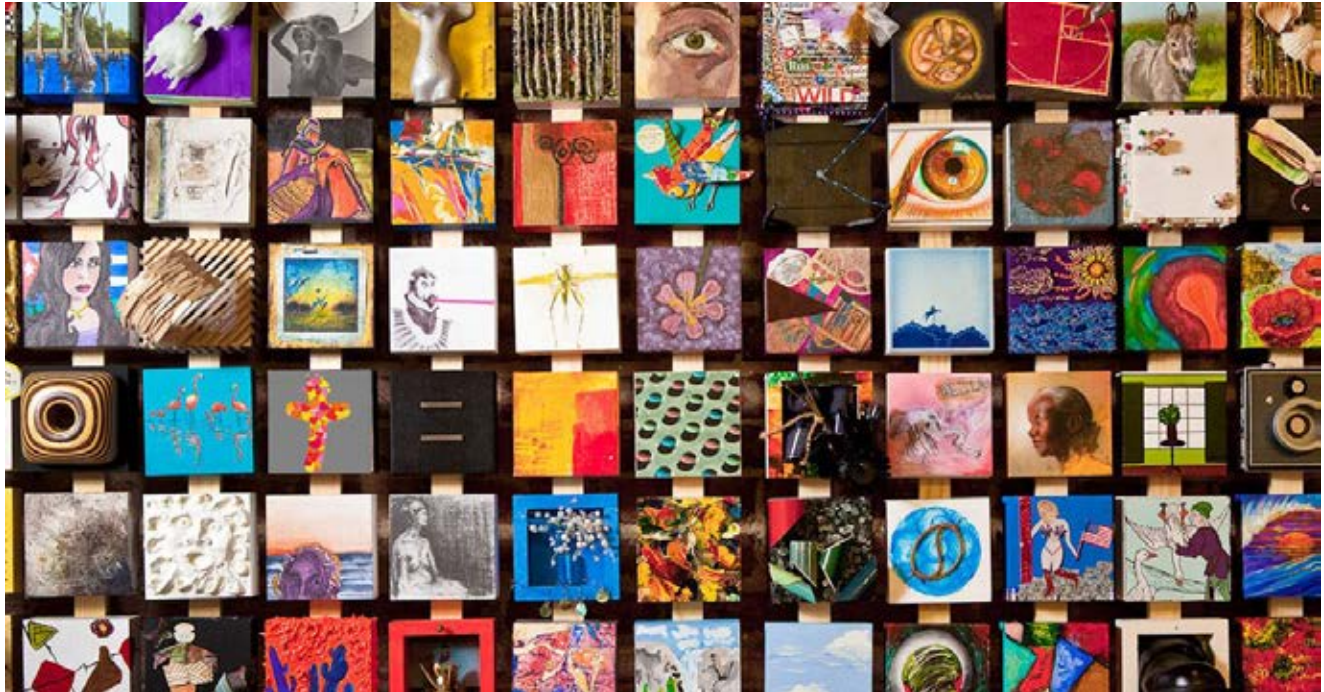
Sales & Pricing:

- All artworks sell for a flat rate of **\$88**.
- Artists receive **\$50** for each piece sold!
- Plus there will be a Peoples Choice Award \$100 for the winner

Important Dates:

- **Artwork Due:** 2 November 2026
- **Opening Night:** 6 November 2026 at Bodalla Arts Factory
- **Exhibition Runs:** 6 Nov – 23 Dec 2026
-

Ready to join? Register here [Events – Luke Kelly Artwork](#)



Luke Kelly -Visual Artist

Art Room, 1/114 Wagonga Street, Narooma NSW 2546

0435 041 792

www.lukekellyartwork.com



River of Art - Next Steps

YOUR VOICE, YOUR FESTIVAL, OUR FUTURE

River of Art belongs to the communities, artists, volunteers, audiences and businesses who bring it to life each year. As we look ahead, we're taking the time to listen.

This survey is the first step in a broader community consultation process that will help shape the future of the Festival. Following this, we'll share what we've heard and invite all participants to join the conversation in person.

Whether you've attended an exhibition, opened your studio, volunteered, hosted an event, supported a local business or simply enjoyed the creative energy that River of Art brings to the region, we urge you to participate and have your say.

Thank you for helping shape what comes next.

THE INTRODUCTION

For more than two decades, River of Art has been a defining part of the cultural life of the Eurobodalla. An artist-led festival, we have grown from humble beginnings into one of the NSW South Coast's most distinctive creative events, connecting hundreds of artists, local businesses, residents, volunteers and visitors each year.

We're now at an important moment in the festival's story. Like many community-driven events, River of Art faces real and pressing challenges. After losing a key source of funding, our financial future needs to be reviewed and the volunteer energy that makes it possible needs to be sustained.

These aren't new pressures, but they need honest answers. To find those answers, we need to hear from you. Please click on Survey link.

SURVEY

This survey is about understanding where River of Art's value truly lies in your eyes. Your responses will help shape how the festival evolves: how it supports artists, engages community and local businesses, rewards its volunteers, and creates value for its funders and partners.

The survey will take around 7-8 minutes to complete. All responses will be analysed in aggregate and no single response will be attributable to an individual, and every voice matters, whether you've been part of River of Art for one year or twenty.

AN INCENTIVE

And because shaping the future is always better with good food involved, we're thrilled to be supported by two wonderful hospitality businesses that make our region such a special place. A heartfelt thank you to Merivale Restaurants, Narooma & Beyond and Arlo at Oaks Ranch, Mossy Point for generously supporting this community consultation.

The first 200 people to complete the survey will go into the draw to win a Merivale dining voucher. All attendees to the in person forum following the survey results will go into the draw for the Arlo Dining Voucher. Date to be advised.

Known for creating memorable hospitality experiences, Merivale venues offer everything from relaxed coastal dining to celebrated city destinations. The voucher can be redeemed locally at Queen Chow Narooma, Quarterdeck, Lynch's Hotel or The Inlet, or at any of Merivale's participating venues across Australia.



Arlo at Oaks Ranch. Blessed by our organic surrounds, NSW south coast produce is brimming with colour, flavour and quality. Drawing from the Pacific Ocean and the coastal lands, dining at The Oaks Ranch offers a delicious experience.



We need your support

Every Little Bit Helps

Do you have a few hours and some basic admin skills to share?

- If you have admin skills & about 8 hours a month to give - we need you
- If you have secretarial skills - we need you



- If you have grant writing skills - we need you
- If you can Sponsor or Donate - we need you
- The full story - [Read Here](#)

[Support Sponsor Donate HERE](#)

[Volunteer Enquires HERE](#)



MACS Executive Committee	2026
President	Cathy Amos
Vice President 1	Julie Hartley
Treasurer	Fiona Lyall-Hughes
Assistant Treasurer	Marceline Eichmann
Secretary	Jane Miller
MACS Committee Members	
Public Officer	Julie Hartley
Studio Groups	Donna Goulding
Newsletter, Web Page, membership	Christine Kris Macauley
Social Media	Fiona Lyall
Studio Manager	Lucinda Constable
Non Committee Positions Print Media & Photography	Rosy Williams
MACS Conveners	
Oils & Acrylics	Cheryl Hill
Life Drawing	Janet Jones and Lorraine Willcock
Lead Lighting	Bob Burnside
Mosaics	Judy Gordon
Ceramics/Pottery	Donna Goulding
Plein Air	Margaret Moran
Textiles	Judy Glover
Water Colour	Cathy Amos
MACS Contacts	macsartnarooma@gmail.com



Amanda's of Mogo

10% Off
for MACS Members

The biggest & best range of professional art supplies as well as paper craft materials in the area. We offer workshops for all levels in mixed media, stamping, cardmaking, scrapbooking & polymer clay.

DANIEL SMITH 

ARCHES®

FABRIANO

FW.

Atelier
Interactive
ARTISTS' ACRYLIC



CANSON®

DERWENT

WINSOR & NEWTON

Schmincke

ART SPECTRUM
Finest Artists' Colours
MADE IN AUSTRALIA



JO SONJAS
ARTISTS' COLOURS



Open 7 days—9am to 5pm

41 Princes Hwy, Mogo NSW 2536
(5 mins south of Batemans Bay)

Ph/Fax: 02 4474 3453



YouTube

www.amandasofmogo.com.au

communityunderwriting.com.au



Community
Underwriting