



Montague Art and Craft Society Inc

Newsletter April 2026



President's report - April 2026

I'm happy to report that the recent MACS Easter Exhibition, held at Club Narooma, was a success.

We had a great selection of artwork from our groups - 119 in total, with 36 works sold.

Congratulations to Jan Atkinson, for winning the People's Choice Award, with her gorgeous mosaic possum, "Pinky".

Lucinda's Easter themed raffle was popular.

Congratulations to Gary Caldow, who won first prize, which was an original Val Tippins painting.

Putting together such an exhibition is a huge effort and couldn't be done without lots of volunteers.

Thank you to:

Club Narooma, for allowing us to use the Montague Room for the weekend.

Macauley Family Investments for the \$500 donation for Opening Night

Thanks to:

Alison Spurgeon, Margaret Moran and Donna Goulding, for spending hours hanging the artwork so beautifully the day before the opening.

Jo Junor and her electrician son, Brad, for getting the lighting working. Everyone commented what a huge difference it made.

Lucinda Constable, for organising the raffle and making all those Easter baskets look so inviting.

Also, to everyone who contributed towards the raffle.

Jo Junor, Randy Miller, Mark Amos and Riley Amos for transporting all the equipment to and from the Studio.

Everyone who sat minding the exhibition over the weekend.

Jane Miller, who helped me on Thursday when the artworks were dropped off.

Last, but not least, all our members who entered their artwork, showcasing the amazing talent we have.

I hope I haven't forgotten anyone.

Cheers
Cathy Amos

**WHAT'S ON
MACS Studio April 2026**

**Alternate
Mondays –
Stained Glass
Group with Bob
Burnside**



**Monday afternoons Oils & Acrylics
with Cheryl Hill**



**Wednesday
Afternoons and
Thursday mornings**

**Pottery and
Ceramics
with Donna
Goulding**



**Thursday
afternoons**

**Water colour
Cathy Amos**



**Tuesdays
TEXTILES from
10:00 am with
Judy Glover**



**Wednesday mornings - Mosaics with Judy
Gordon**



**Friday Mornings - Life Drawing
with Janet Jones & Lorraine Willcock**

PLEIN AIR
February – June, 2026

February

2 – 3	Bullengella Lake
9 - 10	Ringlands Rainforest
16 - 17	Jersey Cattle, Tilba
23 – 24	Potato Creek

March

2 - 3	Nangudga Views, Tilba
9 – 10	Bingi Rocks
16 – 17	Cemetery Beach, Glasshouse Rocks
23 - 24	Mossy Point Coffee Van
30 - 31	Cowdroy Creek

April

6 – 7	Forsters Bay Sheds
13 - 14	Moruya Old Buildings
20 - 24	Braidwood
27 – 28	Henkley Farm, Tilba

MAY

3 – 4	Camel Rock
10 – 11	Tuross River Bridge
17 – 18	Punkalla
24 – 25	Turlinja – old house

JUNE

1 – 2	Lewis Island
8 – 9	Cresswick Cove, Dalmeny
15 – 16	Corunna Creek, Old Highway
22 – 23	Town Wharf
29 – 30	Bermagui River, upstream

MACS VISION - A place to work together in creative groups.
Workshops for members to upgrade and diversify their skills.
Opportunities for members to exhibit their work.

MACS NEWS by Rosy Williams

Easter Exhibition

3 – 6 April 2026, Club Narooma



Julie Hartley and Jane Miller enjoying the Opening

President Cathy Amos Opened the Exhibition



Donna Goulding, Helen Bromwich & Jennifer Hawkins at Opening



Linda Ord



Donna with sculpture "Bather"

Easter Exhibition Cont....



Linda, Margaret Moran and Karen



"Bather" by Donna Goulding



Display board



Trudy, Kathryn and Jo Junor



Cheryl Djikic – Life Drawing

Easter Exhibition Cont....



Mixed media Ceramics and Life Drawing



Peter Robinson



Thanks Jo, for the amazing display of native flowers



Cathy Amos – Lovey Dovey

Easter Exhibition Cont....



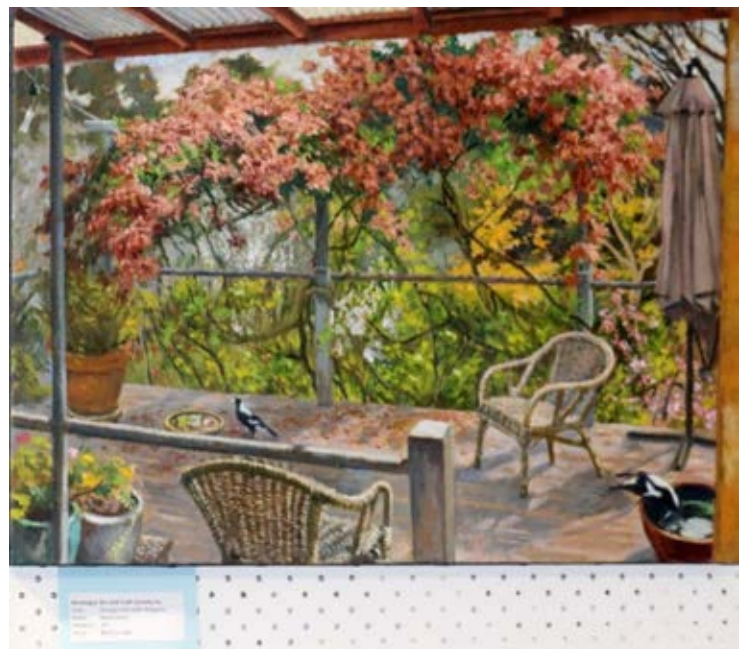
Life Drawing – Exhibition Board



Hilton Schofield – Oyster Catchers



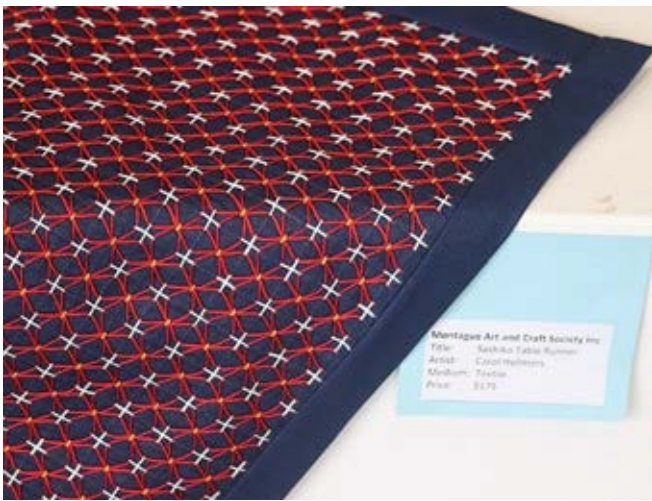
Linda's purchased mosaic – great choice



Janet Jones – Patio with Magpies



Paintings on Easels



Carol Hellmers – Table Runner



Heather Ferguson



Jan Atkinson – People's Choice Winner

A word from Life Member – Jennifer Hawkins

I loved the variety of ideas and processes that was apparent in this MACE exhibition. The relaxed use of materials in a friendly and accepting group really came through. 'Fear of failure' freezes a lot of potentially creative people. I think the studio atmosphere of 'just try it' has released members to be experimental and truly creative. The joy of making was reflected in the work.

**Montague Art &
Craft Society Inc.
1981 - 2026**



**Celebrating 45-years
in the Community
Art Space**

Brief History

Initial public meeting held on 23 March 1981, at the Dalmeny Bushfire Brigade Hall – 57 people attended to discuss creating a Narooma and District Creative Arts and Crafts Society.

Official name agreed at that meeting was “The Montague Arts and Crafts Society” (MACS).

Inaugural Annual General Meeting (AGM) held 27 July 1981.

First MACS exhibition held at the Narooma High School over Easter 1982.

The official logo, adopted in the 1980’s, was “a graphic representation of flashing beams of light from the famous Montague Lighthouse”.

Regular classes, workshops and exhibitions held in hired halls and outdoors through 1980’s – 1990’s.

Incorporated 19 May 1999.

ABN 1 November 1999.

Rented premises at 44B Princes Highway, Narooma, from May 2000 – 2004.

Opened Gallery on the Flat 2000.

Rented premises at Narooma School of Art, the Old Narooma Library (now Cinema 2, Narooma Kinema), from September 2003 – 2007; Official opening 24 February 2004.

Rented premises at the Narooma School of Art Cottage, 92 Campbell Street Narooma from July 2006 – 2017.

Spent 10-months cleaning and renovating The Cottage; Official opening 31 March 2007.

Official letterhead incorporated the MACS Cottage.

MACS Facebook Page created September 2013.

Won tender to manage the Narooma Visitor Information Centre (VIC). Narooma VIC Gallery opened 2016.

Adopted new logo – still with Lighthouse theme, but in colour, and incorporating a paint brush into the design.

Rented by sub-let from the Narooma Men’s Shed, Building 2, 24 Glasshouse Rocks Road, Narooma October 2017 – 2019

Rented directly from owners (MFI) Building 3, 24 Glasshouse Rocks Road, Narooma October 2019 to present day.

Eurobodalla Shire Council closed the Narooma Visitor Information Centre May 2021.

The Bas

Exhibit with us - The Basil Sellers
Exhibition Centre's annual exhibition program celebrates

local and national creative arts and contemporary culture by supporting and showcasing a cross section of artistic practices.

Each year we invite submissions from solo and group exhibitors for inclusion in our annual exhibition program. Artists are invited to apply for a slot at the Bas, the Mechanics Institute, or both.

Expressions of interest for 2027 exhibition program open If you are interested in exhibiting with us, you can find out more about eligibility and submission requirements in the guidelines.

Key dates

Entries open: Wednesday 18 March 2026, 8.30am

Entries close: Friday 17 April 2026, 4.30pm

The BAS

Open to artists and artist groups around Australia.

Successful applicants will receive:

- a 4-week exhibition slot
- \$1,000 stipend towards exhibition costs
- professional support with the development of the exhibition
- access to equipment and resources
- promotion through online and printed channels
- opening event
- artist profile on website
- 360 virtual tour of exhibition on the Bas website.



The Mechanics Institute

Open to Eurobodalla artists only.

Successful applicants will receive:

- a 2-week exhibition slot plus install and de-install time
- access to equipment and resources
- promotion through online and printed channels
- \$550 stipend for exhibition costs
- venue hire covered.

Guidelines

[Read the Bas exhibition application guidelines \(526.9 KB\)](#)

[Read the Mechanics Institute exhibition application guidelines \(233.4 KB\)](#)

Apply now

[Complete your application online](#)

For assistance with accessibility or enquiries on the application process, please contact Council's Creative Arts Officer,

Sue Blackburn:

T: 4474 7355

E: The BA

[BAS Exhibition](#) for more information

NEWS & Events

Please click on the website links below to read about news, activities and events in our region.

[South East Arts](#) [Four Winds](#)

[Regional Arts Roundup](#) [Spiral Gallery](#)

SPIRAL GALLERY



Echoes On The Lake by Jane Murphy



Naturally Connected

Reading The Water by Rachel Vogelzang



Plants by Phoebe Bakker

Echoes On The Lake - Jane Murphy

Gallery 2 - 1st April – 14th April 2026

For over a decade Jane's work has been inspired by Merimbula's Top Lake, exploring cloud formations and their relationship with the shoreline. Jane captures the quiet poetry and subtle rhythms of the landscape.

This exhibition combines serene, dream-like oil paintings and delicate sculptures of objects found in and amongst the shoreline.

Naturally Connected

Peter Otton, Rachel Vogelzang & Phoebe Bakker

Gallery 1 - 17th April – 13th May

Opening Friday 17th April, 6 - 8pm

Naturally Connected brings a father and his two daughters together in a shared exploration of nature as seen through three unique perspectives.

The works of Peter and Rachael feature light, reflections and the motion of water as their subject matter, invoking the contemplative state that comes from being in or near large bodies of water. Phoebe focuses on the patterns and colours of plants. The work is soothing while also displaying a riot of colour.

Plethora Of Postcards - 15th Anniversary

This year is the 15th anniversary of the 'Plethora of Postcards'.

This is a very popular annual exhibition at Spiral Gallery. It is a true community exhibition, open to everyone and fills the gallery with hundreds of A6 sized artworks showing an amazing variety of subject matter and mediums.

The exhibition is on from Friday 12th of June to Tuesday 7th of July.

Submissions are due by **Friday 29th of May.**

We expect entry form and flyer to be finalized by the first week of April
Please see website for more information.

Spiral Gallery 47 Church St Bega
Open Mon-Fri 10am-4pm, Sat 10am-1pm.
www.spiralgallery.org.au

Two special categories this year:

- *15 years ... a continuous thread and**
- *In the Garden**

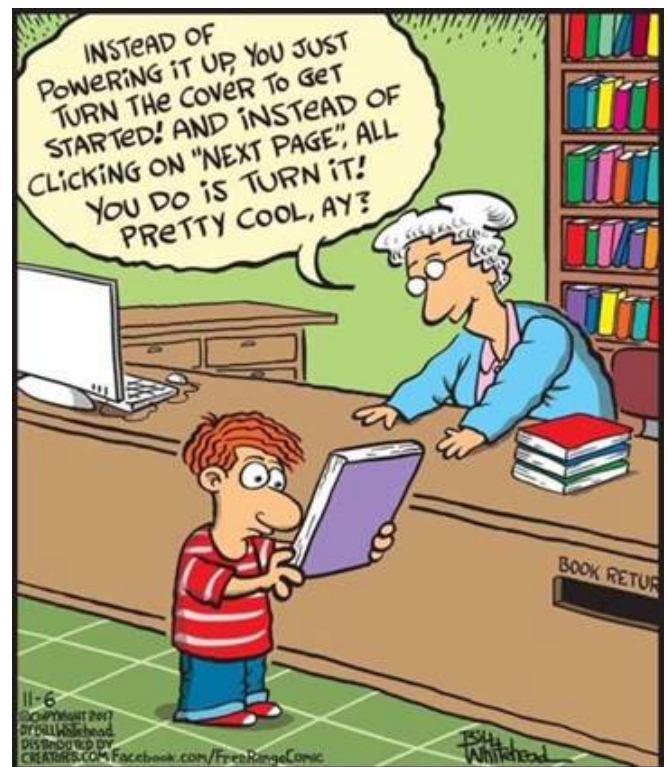
Postcards (any theme) can also be entered in different age groups, and also either 2-dimensional or 3-dimensional, respectively.
Age Groups: Juniors (under 12yrs), Youth (12 to 21), Adult (over 21yrs).

The rule for 3-dimensional work is that it must have an A6 base and not extend out to the side.

Entry fees:

- \$6 - for Adult (up from \$5 in previous years)
- \$2 - for Youth
- \$1 - for Junior

Just to make you smile



MACS Executive Committee	2026
President	Cathy Amos
Vice President 1	Julie Hartley
Treasurer	Fiona Lyall-Hughes
Assistant Treasurer	Marceline Eichmann
Secretary	Jane Miller
MACS Committee Members	
Public Officer	Julie Hartley
Studio Groups	Donna Goulding
Newsletter, Web Page, membership	Christine Kris Macauley
Social Media	Fiona Lyall
Studio Manager	Lucinda Constable
Non Committee Positions Print Media & Photography	Rosy Williams
MACS Conveners	
Oils & Acrylics	Cheryl Hill
Life Drawing	Janet Jones and Lorraine Willcock
Lead Lighting	Bob Burnside
Mosaics	Judy Gordon
Ceramics/Pottery	Donna Goulding
Plein Air	Margaret Moran
Textiles	Judy Glover
Water Colour	Cathy Amos
MACS Contacts	macsartnarooma@gmail.com



Amanda's of Mogo

10% Off
for MACS Members

The biggest & best range of professional art supplies as well as paper craft materials in the area. We offer workshops for all levels in mixed media, stamping, cardmaking, scrapbooking & polymer clay.

DANIEL SMITH

ARCHES

FABRIANO

FW

Atelier
Interactive
ARTISTS' ACRYLIC

CANSON

DERWENT

WINSOR & NEWTON

Schmincke

ART SPECTRUM
Finest Artists' Colours
MADE IN AUSTRALIA

JO SONJAS
ARTISTS' COLOURS



Open 7 days—9am to 5pm

41 Princes Hwy, Mogo NSW 2536
(5 mins south of Batemans Bay)

Ph/Fax: 02 4474 3453



www.amandasofmogo.com.au

communityunderwriting.com.au



Community
Underwriting