

Winter 2021

Enquiries : phone Margaret 0427208504

June 8th & 15th Central Tilba Cheese Factory end. Plenty of parking and buildings and also the hills and paddocks behind the carpark.



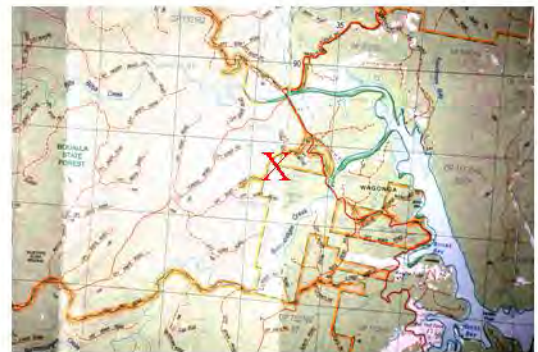
June 22nd & 29th Wallaga Lake Bridge. Parking near the toilets, also to the right before you cross the bridge.

July 6th & 13th Rotary Park Looking toward the wharf and boats.



July 20th & 27th Surf Beach & Golf Course Bridge

August 3rd & 10th Scenic Drive Billa Billa Creek. Plenty of parking and sun near Grumley's Bridge at the back of Wagonga Inlet. Access along Scenic Drive from the north end (Kianga Forest Rd) or south end (off the Old Highway). A pretty creek and nice forest area at the junction of Billa Billa and Cawdroy Creeks.



August 17th & 24th Horse Island Rd Bodalla Half way between Bodalla & Potato Pt. turn left onto Potato Pt Rd. About 1km along.S

August 31st 7 September 7th Forsters Bay Boats and sheds Parking at the Marina or across the road in Bettini Lane.

